



QUARRY TILE

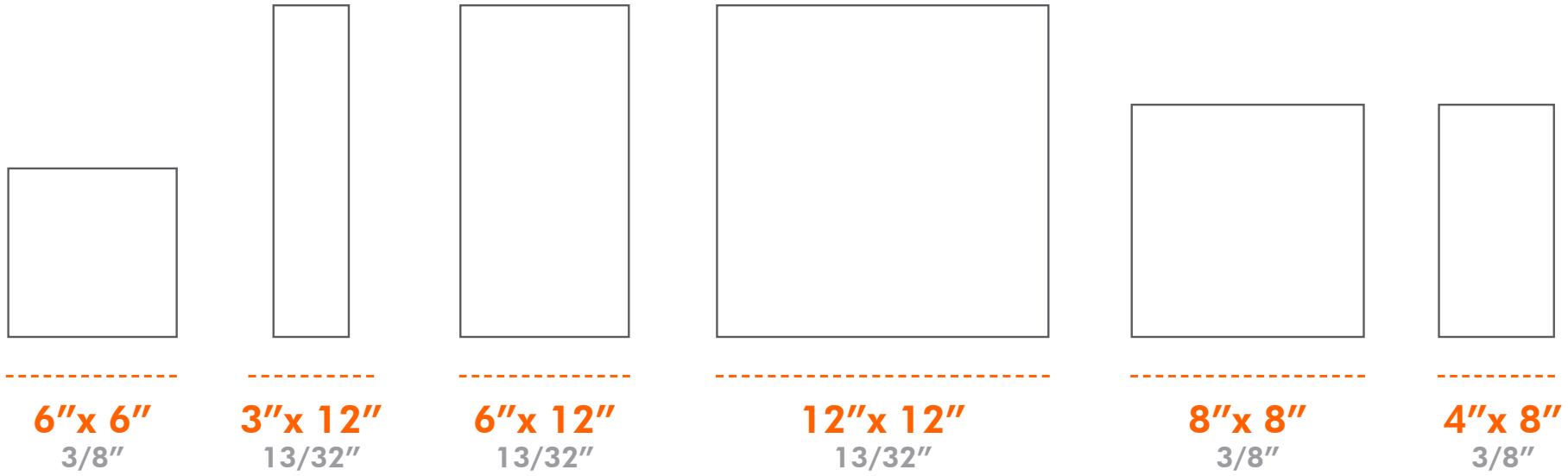
Spain Ceramic Tiles, Corp. | 2775 W. 61 St #106 | Hialeah, FL 33016 USA | T:
(305)521.3418 | T: (305)521.3663 | F: (305)521.3419 |
E: info@spainceramictiles.com | W: <http://spainceramictiles.com>
to WhatsApp Cell. 305698.0304

INDEX

QUARRY TILE

SIZES -----	4
QUARRY TILE -----	6
QUARRY TRIMS -----	7
QUARRY COLONIAL ----	9
KLINKER	
PORCELAGRES -----	11
KLINKER ACQUA -----	13
TECHNICAL	
INFORMATION -----	14

SIZES



FINISHED



Smooth



Abrasive



Wire Cut



QUARRY TILE

QUARRY TILE



SPANISH RED SMOOTH
225000384
6"x 6"

SPANISH RED ABRASIVE
225000386
6"x 6"

SPANISH RED SMOOTH
225000390
4"x 8"

SPANISH RED SMOOTH
225000381
8"x 8"

SPANISH RED SMOOTH
225000376
12"x 12"



SAHARA SAND SMOOTH
225000385
6"x 6"

SAHARA SAND ABRASIVE
225000388
6"x 6"

SAHARA SAND SMOOTH
225000382
8"x 8"

SAHARA SAND SMOOTH
225000377
12"x 12"



MOCCA SMOOTH
225005609
6"x 6"

MOCCA SMOOTH
2250006648
12"x 12"



CHOCOLATE SMOOTH
225024006
12"x 12"

QUARRY TRIMS



1

**INSIDE CORNER
SPANISH RED**
225000344
1"x 6"

**INSIDE CORNER
SAHARA SAND**
225000345
1"x 6"



2

**OUTSIDE CORNER
SPANISH RED**
225000347
1"x 6"

**OUTSIDE CORNER
SAHARA SAND**
225000348
1"x 6"



3

**COVE
SPANISH RED**
225008126
6"x 6"

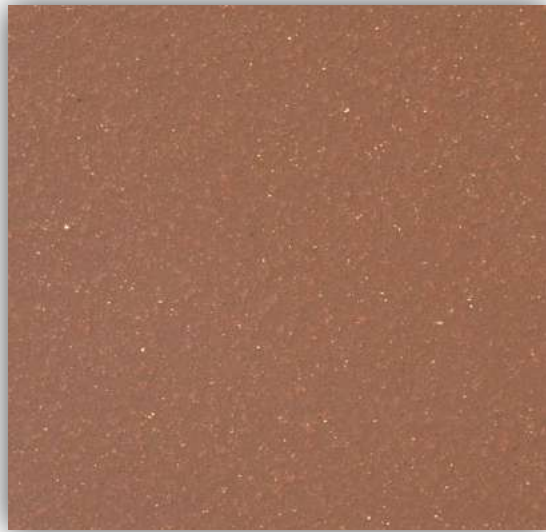
**COVE
SAHARA SAND**
225008127
6"x 6"



COLONIAL GRAY SMOOTH

QUARRY TILE

COLONIAL

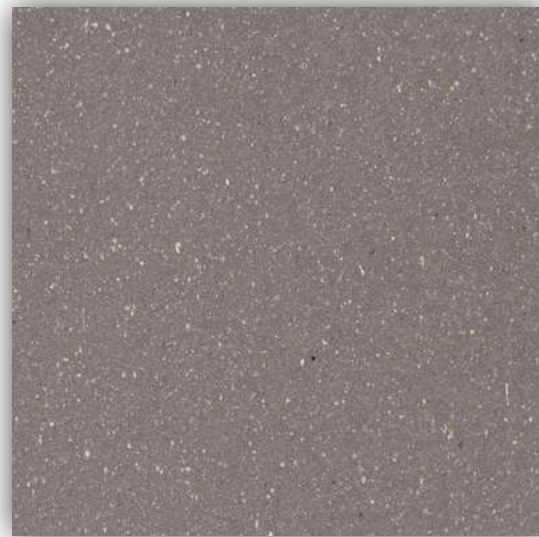


COLONIAL RED SMOOTH

888 100622
6" x 6"

COLONIAL RED ABRASIVE

888 100623
6" x 6"



COLONIAL GRAY SMOOTH

888 100676
6" x 6"

SAHARA GRAY ABRASIVE

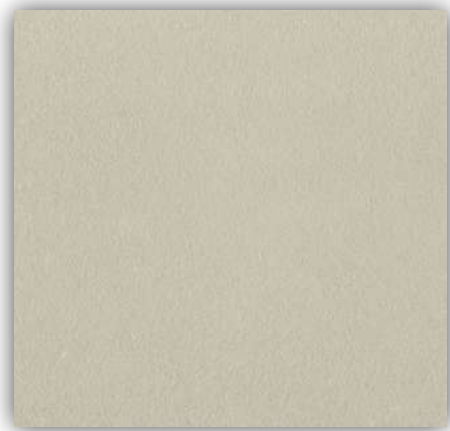
888 100684
6" x 6"



KLINKER PORCELAGRES

QUARRY TILE

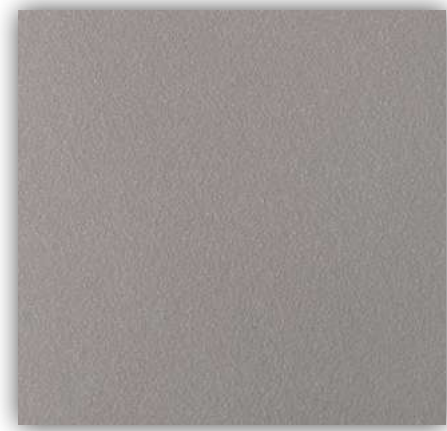
K L I N K E R P O R C E L A G R E S



BONE
225023342
12"x 12"
225023345
6"x 6"



TAUPE
225023343
12"x 12"
225023346
6"x 6"



GREY
225023344
12"x 12"
225023347
6"x 6"



KLINKER ACQUA

QUARRY TILE

K L I N K E R A C Q U A



GREY
225024026
3"x 12"



BONE
225024027
3"x 12 "



TAUPE
225024028
3"x 12"



WHITE
225024029
3"x 12"



LIGHT BLUE
225024030
3"x 12"

QUARRY TILE

Technical information

ANSI A 137.1	SPECIFICATION	TEST	STANDARD	ALFAGRES
	Water Absorption	ASTM C373	≤ 5%	≤ 5%
	Caliber Range (Variation from average facial dimension of sample)	ASTM C499	Minimum -0.75% or -0.09 in (-2.3 mm) Maximum 0.75% or 0.09 in(2.3 mm)	≤ ±0.75% or ≤ 0.09 in
	Wedging	ASTM C502	Minimum-1.00% or -0.12 in (-3.1 mm) Maximum 1.00% or 0.12 in(3.1 mm)	≤ ±1% or ≤ 0.12 in
	Warpage Edge	ASTM C485	Minimum-1.50% or -0.18 in (-4.6 mm) Maximum 1.50% or 0.18 in(4.6 mm)	≤ ±0,75% or 0.09 in
	Warpage Diagonal	ASTM C485	Minimum-1.00% or -0.17 in (-4.3 mm) Maximum 1.00% or 0.17 in(4.3 mm)	≤ ±0,75% or 0.13 in
	Thickness	ASTM C499	Range: 0.050 in (1.27 mm)	≤ 0.040inch
	Examination for Facial and Structural Defects	ANSI A 137.1	2.5% AQL Inspection Level 2 Normal Sampling Plan	Pass
	Modulus of Rupture thickness ≥ 0,2953 inch	ASTM C674	Minimum 2900,7 psi minimum individual 2610,6 psi	> 2900,7 psi
	Breaking Strength (Lb)	ASTM C648	Average > 250 lbf. Individual > 225 lbf.	> 210 lbf
	Deep Abrasion	ASTM C 1343	(Class E2) Loss < 0,0168 inch ³	< 0,0168 in ³
	Resistance to Freeze/Thaw Cycling	ASTM C1026	Observations after 300 cycles. No visible damage.	not affected
	Dynamic C.O.F. (WET) DCOF	UNE 138001	The higher the rating, the higher the slip resistance.	≥ 0,42
	Scratch Hardness (MOHS)	UNE-EN 15771:2011	No Industry Standard	6-8
	Resistance to Chemical Attack	ASTM C650	As Reported	not affected

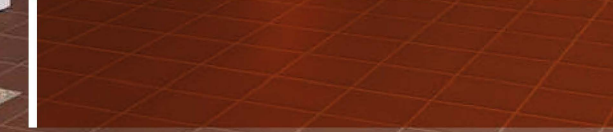
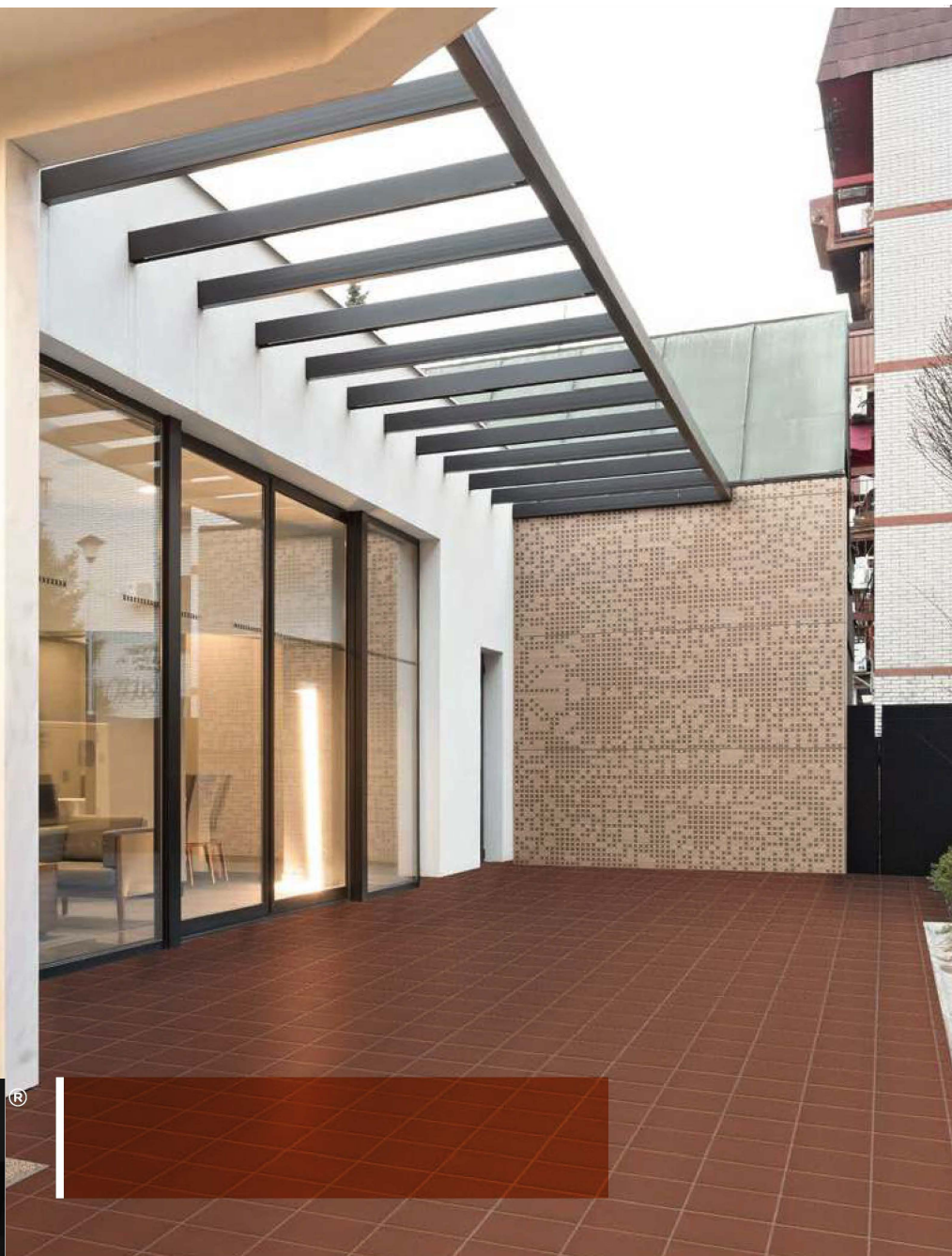
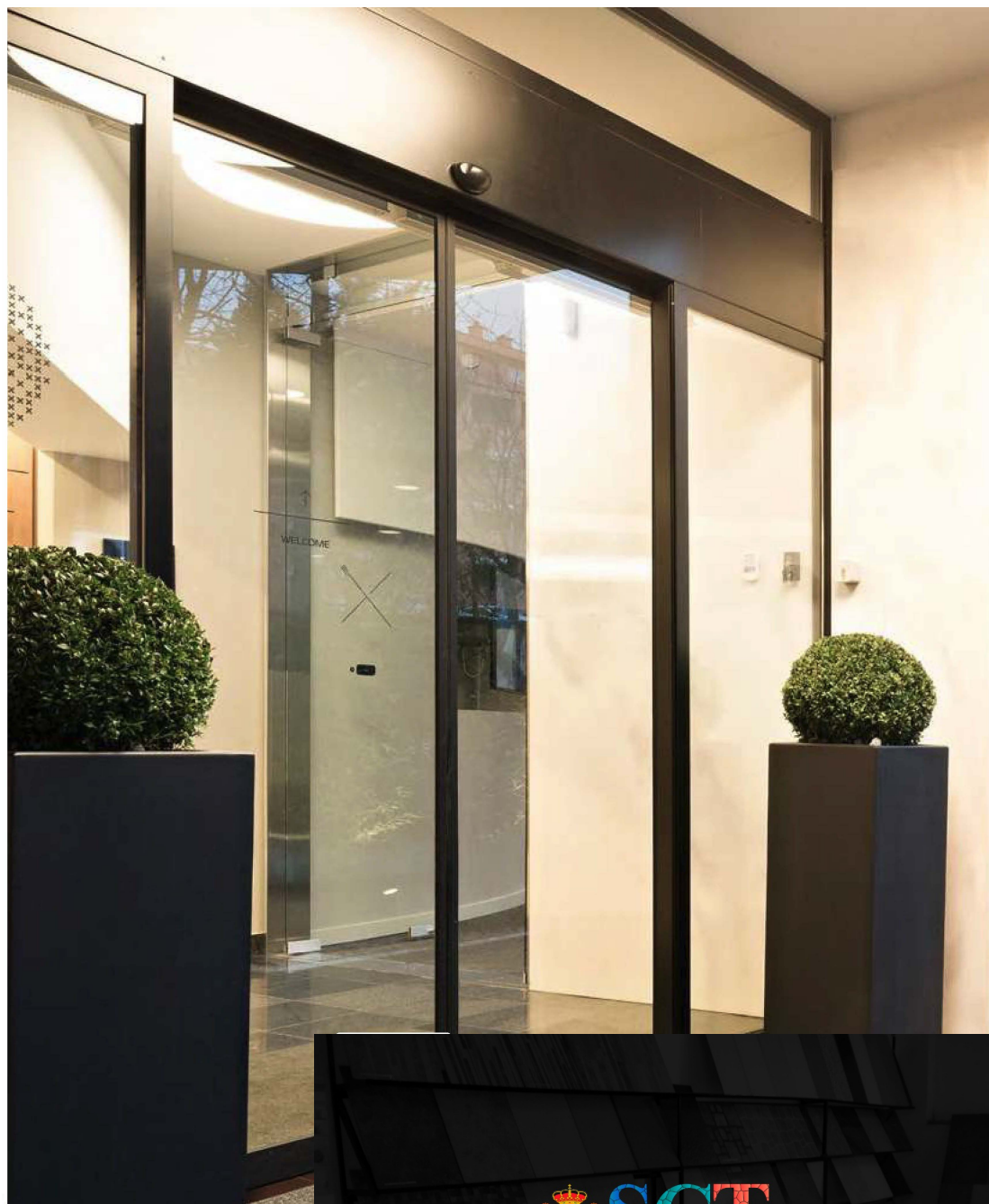
Quarry tile

Packing List

Inches/Cms	SF		MTS ²		GROSS WEIGHT (PESO BRUTO)				PCS
	Box	Pallet	Box	Pallet	Box		Pallet		Box
Klinker Aqua 3x12/ 7x30	10,3	558,0	0,96	51,84	KG	22,40	KG	1.237	44
		54 BX		54 BX	LB	49,38	LB	2.726	
Andino 4x8/ 20x10	10,8	699,7	1,00	65,0	KG	24,50	KG	1.620	48
		65 BX		65 BX	LB	54,01	LB	3.570	
Túnez 6x6/ 15x15	10,8	710,4	1,00	66,0	KG	21,60	KG	1.453	44
		66 BX		66 BX	LB	47,62	LB	3.202	
Latino 8x8/ 20x20	10,8	699,7	1,00	65,0	KG	24,50	KG	1.620	24
		65 BX		65 BX	LB	54,01	LB	3.570	
Portal 6x12/ 30x15	10,8	710,4	1,00	66,0	KG	21,60	KG	1.453	22
		66 BX		66 BX	LB	47,62	LB	3.202	
Tradición 12x12/ 30x30	10,8	613,5	1,00	57,0	KG	22,50	KG	1.175	11
		57 BX		57 BX	LB	49,60	LB	2.589	

Products sold by units (BN, Cove, Corners)

Packing List								
Inches/Cms	Box	Pallet		Box	Pallet		Box	
Stairtread 12x12	11	561		1,00	51		KG	27,40
		51	BX		51	BX	LB	60,41
6x6 Bullnose	44	2904		1,00	66		KG	23,00
		66	BX		66	BX	LB	50,71
6x6 Cove Base	12	2448		0,27	55,08		KG	8,00
		204	BX		204	BX	LB	17,64
In & Out Corners	10	N/A					KG	1,95
							LB	4,30



Spain Ceramic Tiles, Corp. | 2775 W. 61 St #106 | Hialeah, FL 33016 USA
| T: (305)521.3418 | T: (305)521.3663 | F: (305)521.3419 |
E: info@spainceramictiles.com | W: <http://spainceramictiles.com>
to WhatsApp Cell. 305.698.0304